



Q BASE GROUP W.L.L
CONTRACTING & MECHANICAL

PRE-QUALIFICATION PROFILE



follow us on: [**f**](#) | [**@**](#) | [**in**](#)

qbasegroup.com

Chairman's Message

Qbase Group is proud of its 12 years of rich history and varied experience across various sectors.

As a company, we will continue to offer unmatched value to our clients on the strength of our sound fundamentals in core businesses. We will continue on our path of pursuing growth in high margin growth oriented sectors, particularly in the MEP, water and power sectors where a supply capacity crunch is anticipated with the pressures brought on by the rise in regional population.

We have earmarked a strong focus on improving our client service and relations, as well as increasing our investment and empowering our high margin businesses to drive sustainable and long term growth.

The fundamental pillars of our success remain our skilled, experienced, talented, motivated and dedicated workforce who continue to harness their diverse synergies and today proudly.

I also take this opportunity to thank our shareholders for your continued support of Qbase Group and our businesses. Since our historic listing on the Qatar Financial Market, we have worked on your behalf to build and lead a company that capitalizes on opportunities to grow. A company that exhibits the financial strength to weather both good and challenging market conditions and a business that operates with only the highest standards of integrity and excellence. That was the vision of our founders back in 2004 and that is the vision that we continue to pursue 8 years later across the world.

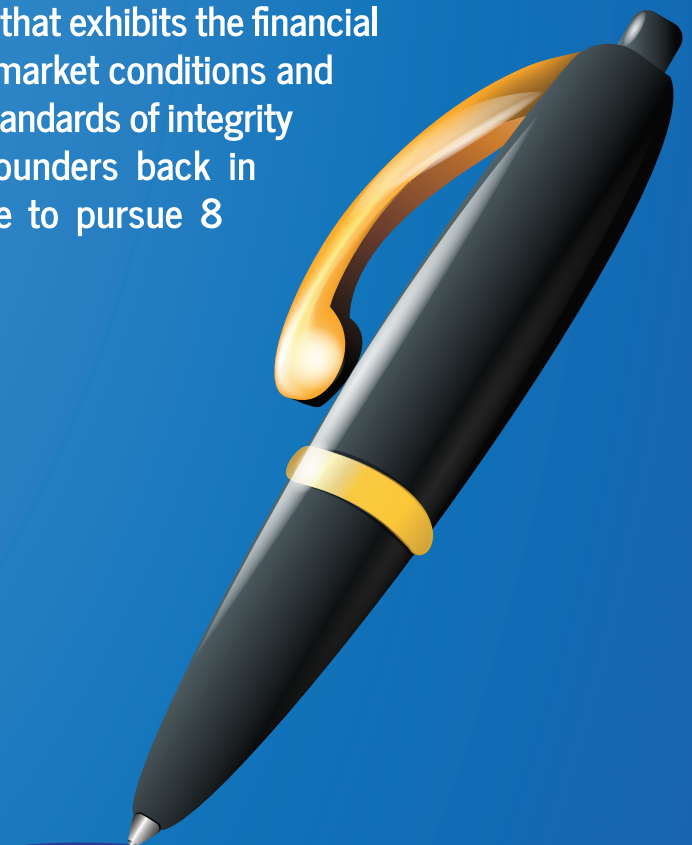


TABLE OF CONTENTS

01	→	Company Profile Inbrief
02	→	Construction Division
03	→	Mechanical Division
04	→	MEP Division
05	→	Projects Completed
06	→	Resources
07	→	OrganizationalChart
08	→	Major Clients
09	→	Contact Us

Company Profile in Brief

Established in 2004, QBASE GROUP over the years has grown into a reputed construction firm engaged in MEP services in Doha, Qatar. Under the leadership & Team Management a strong contracting experience is attained in Qatar, we have gained a reputation as a prominent contractor.

QBASE GROUP provides a complete range of Mechanical, Electrical and plumbing services delivered by a highly experienced & qualified Engineering & Project Management team. Our project portfolio includes private housing, public sector facilities, commercial offices, and healthcare and hospital facilities, all kinds of refurbishment in addition to new MEP projects. At QBASE, we have a skilled work force that understands & prioritizes our customer's requirements. So, whether it is a major construction project or a minor maintenance service, we are committed to serve and satisfy you to the fullest extent.

For us,
our excellent service is our investment!



CONSTRUCTION DIVISION

The construction division is the flagship of the company. Beginning with small projects implemented by well-experienced engineers, QBASE Construction Division is on its way to carve a niche for itself in the construction sector in Qatar.

PRE CONSTRUCTION PLANNING

QBASE has a proactive approach to the preconstruction process. We believe the best projects start with detailed planning. Our services include cost estimating, scheduling, and scope of work development, budget preparation and value engineering. But we go beyond the basics and relentlessly scrutinize the plans and specifications to find extra value for our clients!

DESIGN BUILD

For clients who prefer a single point of contact for all phases of their project, including planning, MEP engineering, construction, testing & commissioning, QBASE offers the design-build delivery method. Under this method, QBASE is responsible for both design and construction of the project.

GENERAL CONSTRUCTION

Our team approaches projects as continuing commitments, providing the flexibility to participate in all phases of the project. Typically, the phases include: planning, design & development, and the most important part of this process, actual on-time delivery and follow through.

TENTAL IMPROVEMENTS BUILDING SERVICES QBASE

is presently involved with various projects like public housing, government buildings, schools, industrial buildings, senior staff housing projects, apartment buildings, private housing/villas, landscaping palaces etc. *We have carried out successful projects with Building Engineering Department – Ministry of Municipal Affairs, Ministry of Defense, KH etc., and other leading consultants.

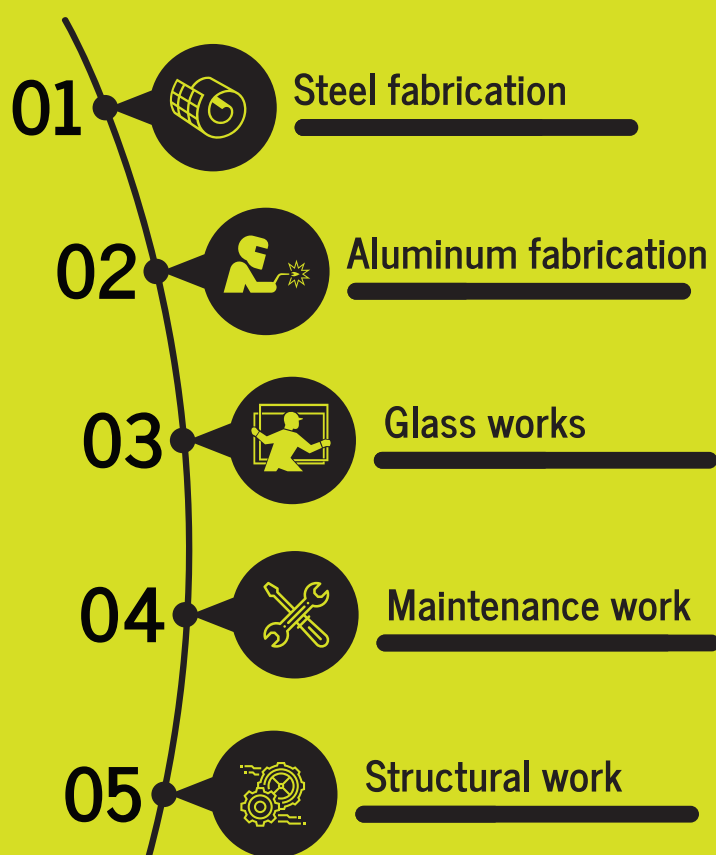







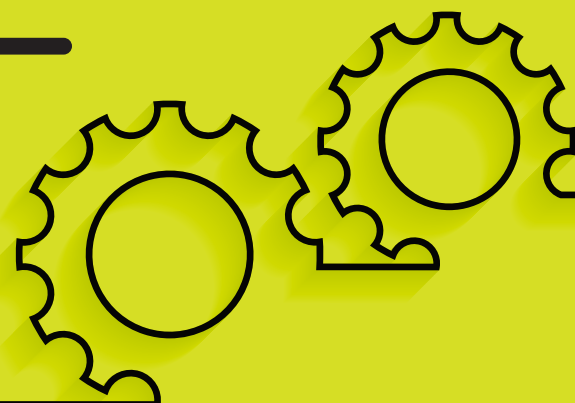
MECHANICAL DIVISION

QBASE GROUP provides a complete range of Mechanical services delivered by highly experienced and qualified engineering and project Management team. Our project portfolio includes private housing, public sector facilities, commercial offices, Health care and hospital facilities, all kind of refurbishment in addition to new MEP projects.

At QBASE, We have skilled work force that understands and prioritizes our customer's requirements. So whether it is a major construction project or a minor maintenance service, we are committed to serve and satisfy you to the fullest extent.

Our team has many years of industry experience in the

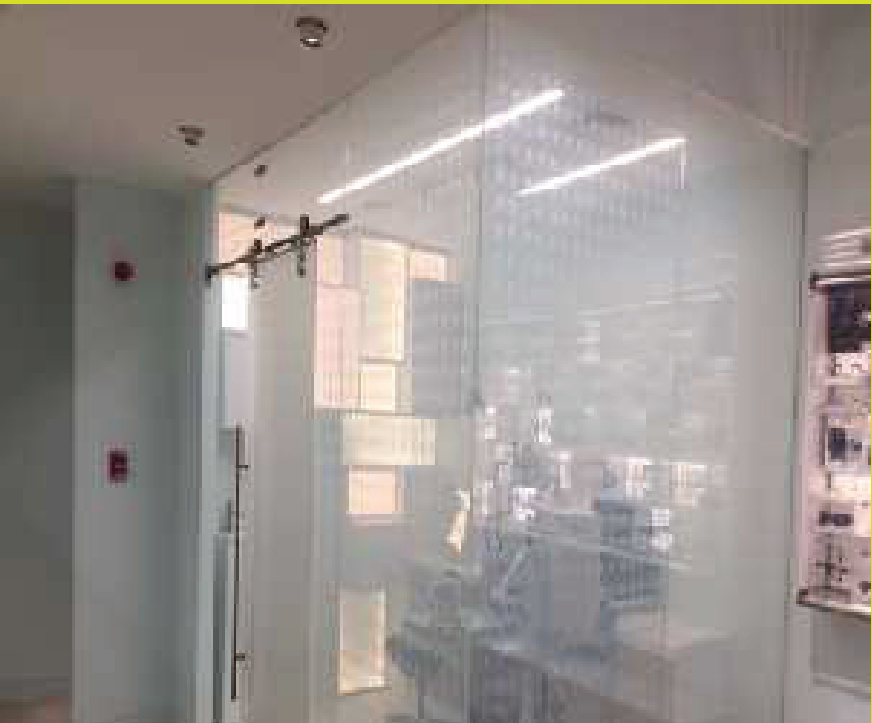
- 
- 01  Steel fabrication
 - 02  Aluminum fabrication
 - 03  Glass works
 - 04  Maintenance work
 - 05  Structural work



STEEL STRUCTURAL WORKS _____



GLASS WORKS



MEP DIVISION

HVAC DIVISION

QBASE & QWTECO PARTNERS have partnered to undertake Design, Supply, Installation, Testing, Commissioning and maintenance of Air Conditioning systems as mentioned below

- Chilled water Air handling units, Fan coil & Air cooled package chillers
- Direct expansion Fresh Air Handling Units.
- Direct expansion Split decorative, wall, floor/ceiling, free standing cassette types, ducted split air conditioners besides package air-conditioning units
- Window type air-conditioning units
- All types of Ventilation units such as Fresh air fans residential & commercial wall/window inline type and Industrial type Axial fans such as Inline, Plate, Ring, Ducted, Roof, Scatter (Diffusion type), Box (Cabinet), Flame proof, Smoke and Jet Fans



LIST OF MEP WORK COMPLETED

MAJOR MEP WORKS CARRIED

Project : Design and Stress analysis for CHW pipes, Mall of Qatar Hotel.

Client : Radiant Engineering

Project Scope:

- Refurbishment of existing chillers & addition of new chillers
- Addition of required relevant chilled water piping with insulation and valve packages for Daikin McQuay chillers
- Replacement of primary and secondary pumps
- Redesign of air and chilled water distribution for entire mall
- Replacement of FCU's for tenants and food court shops
- Design and erection of new ecology unit for food court



CHILLED WATER PIPING WORKS



ECOLOGY UNIT



ALUMINIUM CLADDING WORK



DUCTING WORK

Client : Radiant Engineering

Scope of works

- Installation of entrance vestibules at entrance an first floor
- Inertia base for primary pumps were installed
Plinths for chillers made as per structural consultant's guidelines
- Chilled water piping, insulation and valve packages for the chillers
- Aluminum cladding for the above chilled water pipes
- Refurbishment of existing AHU's and FCU's



SELECTED PROJECT PROFILE

Heart Hospital



Chill Waterpiping, Ac Ducting And Plumbing Work



Electrical piping

Client	: Avon Contracting
Typeofproject	: MEP workat SHEMOUKH tower
Value (Qrs.)	: 6,00,000.00
ProjectScope	: Installation of CHWpiping, AC ducting, Plumbing and electrical work.



Chill Waterpiping, Ac Ducting And Plumbing Work



Electrical piping

SELECTED PROJECT PROFILE

2015 - 2016		
PROJECTS	CLIENT	VALUE (Qrs.)
Equipment Installation-Chiller,Generator and Transformer,Mall of Qatar.	Drake and Scull International	2,000,000.00
Pad Eye Designing, QVC.	VOITH Industrial Services	300,000.00
Chilled Water fabrication and Installation, Rayyan Palace	Drake and Scull International	1,000,000.00
Chiller Erection, District Cooling Plant, Lusail.	Drake and Scull International	800,000.00
Stress Analysis for CHW piping, Mall of Qatar.	Drake and Scull International	70,000.00
Project Management and Process Engineering for New Ferric Chloride Plant, New Industrial Area.	Unichem LTD	500,000.00
Steel Structure support for CHW pipes Design, Fabrication and Erection	Drake and Scull International	250,000.00
Design and Stress analysis for CHW pipes,	Radiant	1,000,000.00
Mall of Qatar Hotel.	Engineering Enterprises	

Stainless Steel Duct Welding, Mall of Qatar.	Khayat Construction and Trading	600,000.00
Design and Stress analysis for Drip Ring of Tanks, QVC	Voith Industrial Services	200,000.00
CHW pipe Fabrication and Installation, Mall of Qatar Hotel.	Radiant Engineering Enterprises.	400,000.00
Heavy End EDC Tank Erection, QVC	Voith Industrial Services	300,000.00

ELECTRICALPROJECTS COMPLETED _____

2015 - 2016		
PROJECTS	CLIENT	VALUE (Qrs.)
HEART HOSPITAL CERNER PROJECT	HEART - Hamad Medical Corporation (HMC)	1,200,000.00
AL KHOR ELECTRICAL RENOVATION	AL KHOR - Hamad Medical Corporation (HMC)	320,000.00
2 KMS STREET LIGHT INSTALLTION AT SALWA ROAD.	ASHGAL (PWA)	120,000.00
WAKRAH HOSPITAL TOWER A & B, 6 FLOORS ELECTRICAL RENOVATION.	WAKRAH - Hamad Medical Corporation (HMC)	1,400,000.00
Construction of port cabin (One Hour Fire rated structure) at Women’s Hospital	Hamad Medical Corporation (HMC)	650,000.00
MEP work at SHEMOUKH tower (Installation of CWH piping, AC ducting, Plumbing, Electrical work)	Avon Contracting	600,000.00
REFURBISHMENTOF MEP WORKS AT BUILDING 109 MEDICAL CITY	HAMAD MEDICAL CITY	75,000.00
RENOVATION WORKS AT BONE & JOINT HOSPITAL	APD ANNEX	220,000.00
S.I.C of HITC REQUIREMENT FOR CELL 5 IN CENTRAL WAREHOUSE IN LVQ.	CENTRAL WARE HOUSE – HMC	300,000.00

RESOURCES

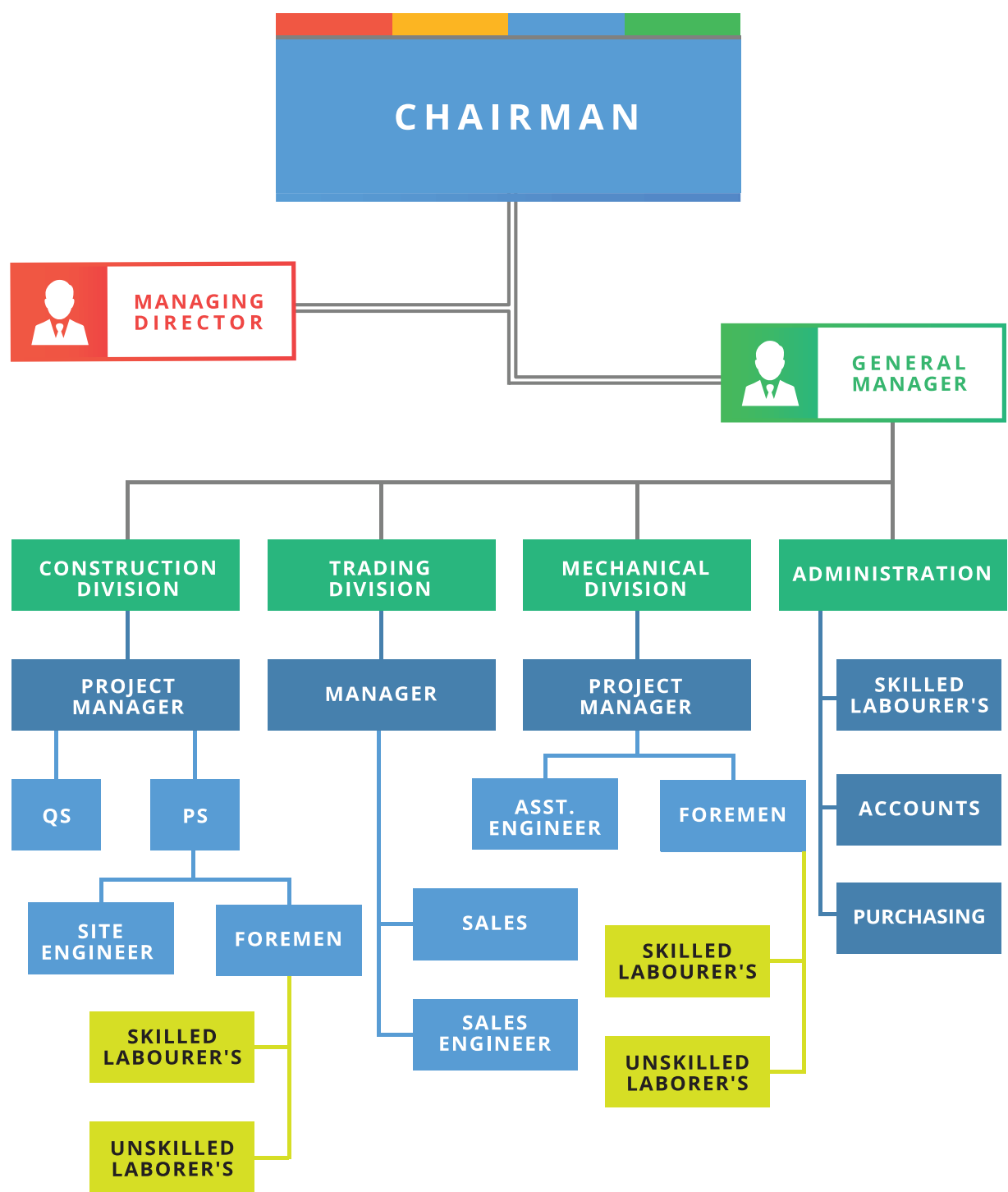


EQUIPMENTS	NO.
MULTI FUNCTION TESTER	2
BENDING MACHINE	5
CRIMPER	2
CONCRETE MIXER	2
GENERATOR	3
WELDING MACHINE	4



VEHICLES	NO.
BUSES	1
PICKUPS	3
CARS	8

ORGANIZATION CHART



Major Client’s List _____



CONTACT US

Q BASE GROUP W.L.L
CONTRACTING & MECHANICAL

Head Office 5/169, Al-jazeera Street, Bin Mahmood, PO Box- 60217. Doha, Qatar.
Telephone: +974 44676890 | Fax: +974 44566291

CONTACT PERSON

MR. MUJEEB KHADER (GENERAL MANAGER)

☎ +974- 55595989 ✉ qbasegroup@gmail.com

qbasegroup.com | follow us on: [**f**](#) | [**@**](#) | [**in**](#)